

A POLYMERIC COLUMN FOR THE EXTRACTION OF THC AND THC METABOLITES



Product Benefits

- Simple one-step extraction elutes all three (3) THC analytes (THC- Δ -9, THC-hydroxy metabolite and THC-carboxy metabolite)
- Enhanced dual mechanism to accommodate hydrophobic character of the THC parent and metabolites
- 10-20 μ m particle size and minimum bed volume for consistent flow through column
- Column conditioning is not required
- Highly reproducible extraction

Method for the Extraction of THC- Δ -9, THC-Hydroxy Metabolite and THC-Carboxy Metabolite from Whole Blood

Sample Preparation

To 1 mL whole blood add drop-wise 2 mL cold Acetonitrile.

Mix thoroughly and centrifuge. Decant and add appropriate internal standards prepared in alcohol.

Add 2 mL distilled water (pH~6.0)

(The sample is ready to be extracted.)

Applying Sample to Column

Load sample directly to column.

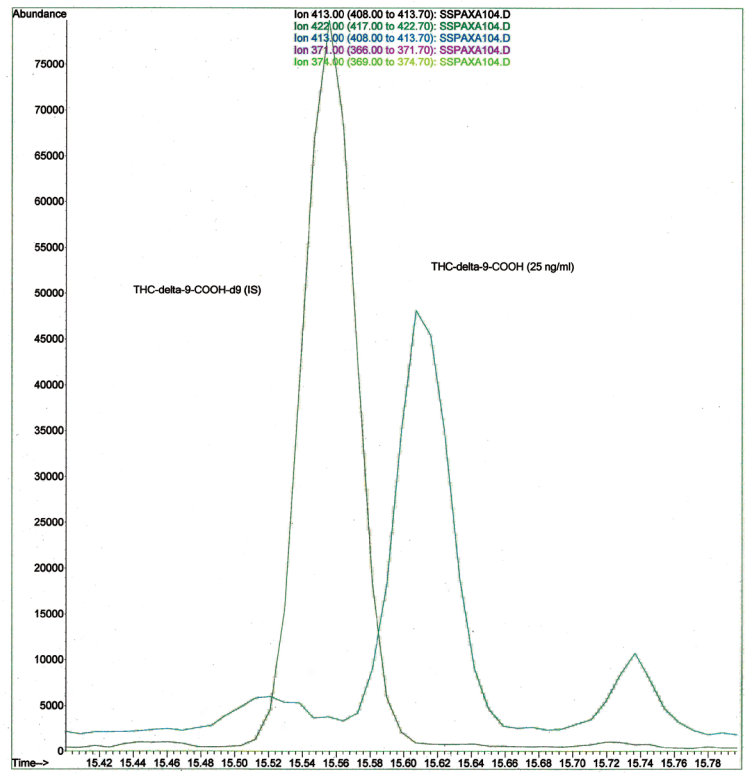
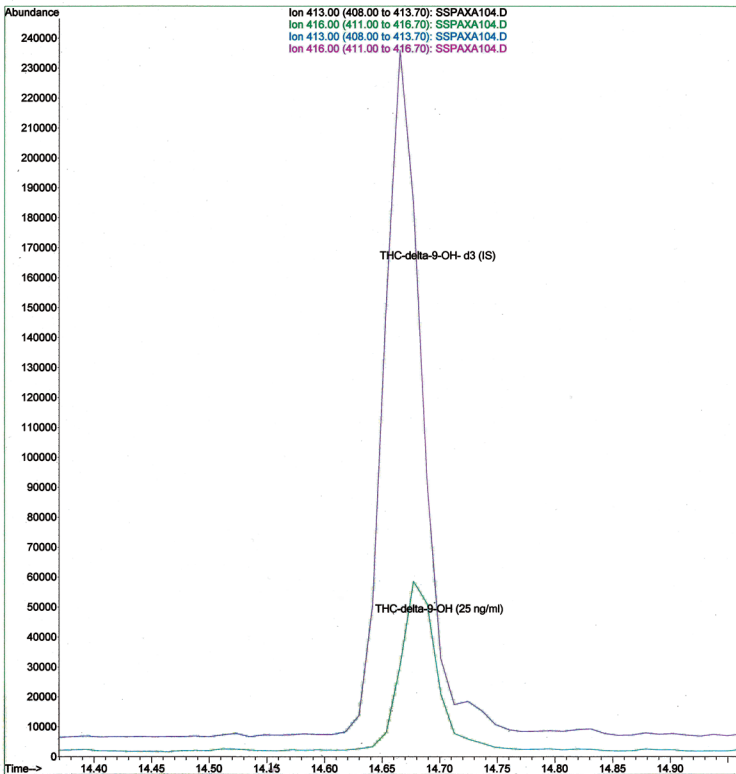
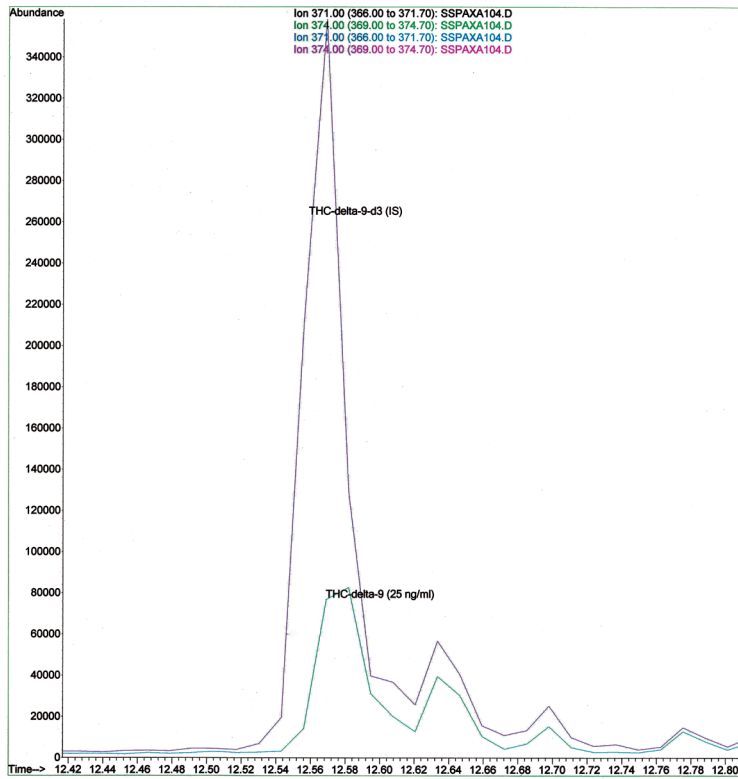
Wash with 1 mL (84/15/1) Water/Acetonitrile/ NH_4OH . Dry column thoroughly under vacuum (10 mm Hg) or positive pressure (~ 30-50 psi) for 10-15 minutes.

Elution

Elute THC (parent), THC-OH and THC-COOH with 49/49/2 (Hexane/Ethyl Acetate/Glacial Acetic Acid)

Evaporate Fraction(s) to dryness and derivatize with appropriate derivatizing agent at ~40°C.

Ion Chromatograms of THC- Δ -9, THC-Hydroxy Metabolite and THC-Carboxy Metabolite



PRICES AND TERMS

Our prices are subject to change without notice. The price in effect when we receive your order will apply. All prices are in US Dollars and are F.O.B. Lewistown, PA 17044. Terms of payment are net 30 days.

MINIMUM ORDERS

We welcome all orders, therefore, we do not have a minimum order requirement. When ordering, please include your purchase order number, complete "Ship To" and "Bill To" address, catalog number, quantity, and description of product(s). Also include your name and a phone number where you can be reached should we have any questions concerning your order.

SHIPMENTS

Normal processing is within 24 hours after receipt of an order. Unless special shipping requests have been made, our trained staff will send all orders by UPS Ground service. The appropriate shipping charges (freight & insurance costs) will be added to the invoice, unless otherwise instructed by the customer.

SPECIAL PRICING

We offer special pricing for volume purchases and standing orders. These discounts apply to bonded phase extraction column purchases only. Please call a sales representative for more information on special pricing qualifications.

RETURN POLICY

Our Quality Manager will handle all returns. Before returning merchandise, please call to obtain a return authorization number from the quality manager. We will need to know the reason for the return, date of purchase, purchase order number and invoice number in order to issue a return authorization number. Return merchandise must be received before a credit can be issued. Returns will not be accepted after 90 days. A restocking fee of 25% of the price paid, or a minimum of \$25.00 (whichever is greater) will be charged on all returns.

WARRANTY

All products manufactured by UCT are guaranteed against defects in materials and workmanship for a period of 90 days after shipment. UCT will replace any items that prove to be defective during this time period.

The exclusive remedy requires the end user to first advise UCT of the defective product by phone or in writing. Secondly, the defective product must be returned within 30 days after proper approval from our Quality Manager. All returns must indicate the purchase order number, the lot number and the shipping date. UCT's total liability is limited to the replacement cost of UCT products.

This warranty does not apply to damage resulting from misuse.

Contact Us

Phone: 215.781.9255
800.385.3153
Fax: 215.785.1226

UCT, Inc.
2731 Bartram Rd.
Bristol, PA 19007

Email: info@unitedchem.com
Web: www.unitedchem.com



4101-24-03



FORENSICS